



**Current Transformer
Technologies LTD**



Voltage Transformer

Model 2VT469

rev 10032025

FREQUENCY:

60 Hz.

STANDARD SECONDARY VOLTAGE:

120 Volts

INSULATION LEVEL:

600 Volts. 10 kV BIL. full wave

ACCURACY CLASS:

± 1% at all burdens up to 5 VA at 1.0 and 0.95 P.F.

THERMAL RATING:

40 VA AT 30°C. amb

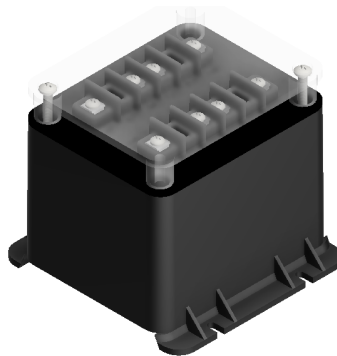
27 VA AT 55°C. amb.

APPROXIMATE WEIGHT:

4.5 lbs.

CONNECTIONS:

Terminals are No. 6-32 screws with one lockwasher and one flat washer



CERTIFICATIONS:



E228202



223647

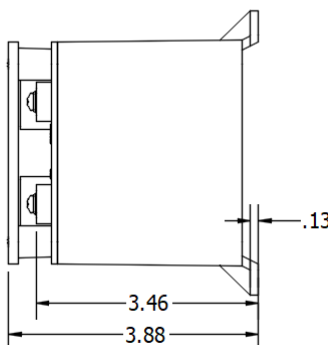
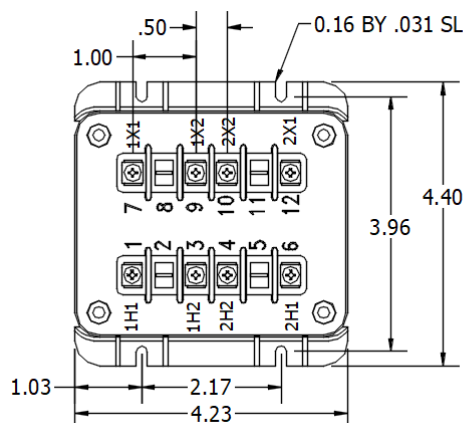


MODEL 2VT469

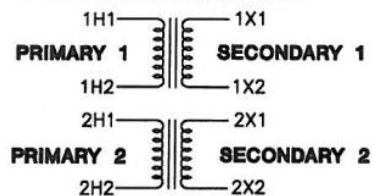
Approximate weight: 4.5 lbs.

CATALOG NUMBER	VOLTAGE RATING	TURNS RATIO	REC. PRIMARY FUSE RATING
2VT469-069	69.3:120	0.58:1	1.5
2VT469-120	120:120	1:1	1
2VT469-208	208:120	1.73:1	0.5
2VT469-240	240:120	2:1	0.5
2VT469-277	277:120	2.31:1	0.5
2VT469-288	288:120	2.4:1	0.4
2VT469-300	300:120	2.5:1	0.4
2VT469-346	346:120	2.88:1	0.4
2VT469-480*	480:120	4:1	0.25
2VT469-600*	600:120	5:1	0.25

- The core and coil assembly is encased in a thermoplastic shell and filled with resin.
- A clear plastic terminal cover is provided with each unit.
- These transformers are designed for operation line to line. They may also be operated line to ground or line to neutral at reduced voltage, (58% of rated volts).
- It is desirable to use a 0.40 amp fuse in the secondary to protect the transformer.
- With two exceptions these transformers are ANSI C57.13 group 1. Those marked * are group 2.
- Model 469 is an assembly of two transformers in one case with all terminals accessible, for open delta connection.



469 CONNECTION DIAGRAM



Products are manufactured in a plant whose quality management system has been certified to be in compliance with ISO 9001:2015 by NQA